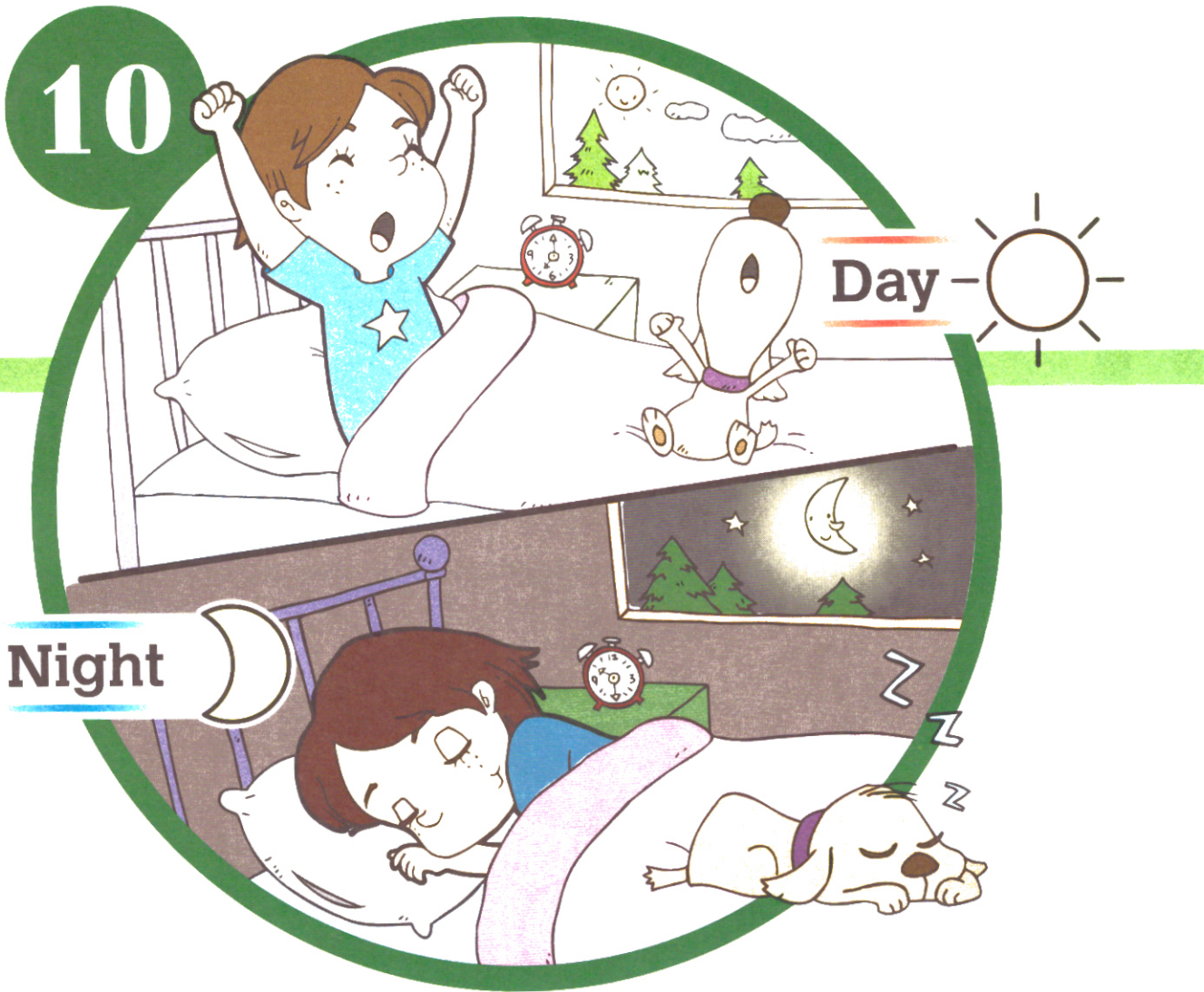


Day and Night



In this unit, students will:

- describe their daily routines.
- describe outdoor temperature changes at different times of the day.
- recognize some words that are used to describe the sun at different times.
- describe how the position of the sun affects the length and shape of shadows.

10

A. Check ✓ the things that you do every day. Then write one more thing that you do every day.

- Watching TV
- Taking a bath
- Having breakfast
- Brushing teeth
- Walking the dog



Our Earth makes one full turn every 24 hours. This gives us day and night. We all do certain things on a daily basis. This means that we do them every day.

• _____

B. See what Helen did yesterday. Put her activities in order by numbering them from 1 to 4.



C. Complete the weather forecast with the given words. Then help the children find what they need for the changes in weather.

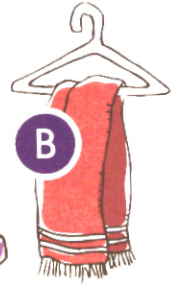
chilly rainy sunny windy

1. Weather Forecast

Monday



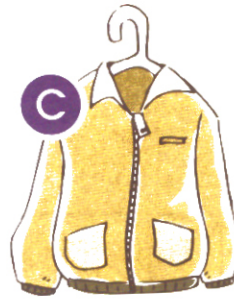
20°C



Tuesday



15°C



Wednesday



5°C



Thursday



12°C

2. Things needed:

Monday: _____, _____

Tuesday: _____, _____

Wednesday: _____, _____

Thursday: _____, _____

D. Match the temperatures with the different times of the day. Write the answers in the spaces provided.

30°C 10°C 15°C



One day is the time it takes for the Earth to make one full turn. The temperature changes as the Earth turns.

1.



2.



3.



E. Find and circle these "sun words" in the word search.



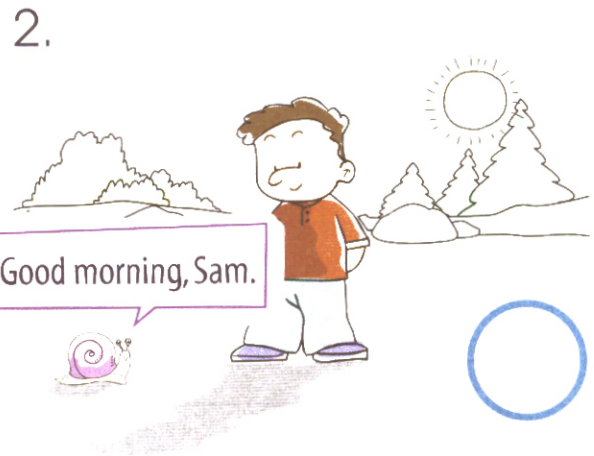
	s	u	n	s	e	t
	u	c	s	u	r	l
	s	n	i	g	h	t
b	u	r	k	m	a	r
y	b	i	d	c	i	d
d	u	s	k	u	s	a
g	h	e	o	r	k	y

F. Look at the shadows and match the times with the pictures. Write the letters. Then answer the question.

- A 8:00 in the morning
- B 10:00 in the morning
- C 12:00 at noon
- D 6:00 in the evening



As our Earth turns around, the sun appears to move through the sky. Shadows change as the sun's position in the sky changes. A short shadow at noon becomes longer through the day.



5. Will the length of the shadow at 1:00 in the afternoon be longer or shorter than the one at noon?

Try this

Hand Shadow Puppets

Find a white or light-coloured wall in a dark room. You can ask a friend to hold a flashlight in front of your hands. Look at the shadow of your hands on the wall. You can try to create interesting things with your hands. Then you can ask your friend to move around to see how the shadow changes.



Step 1: Move the flashlight closer and then away. Describe how the shadow changes.

Step 2: Move the flashlight sideways. Describe how the shadow changes.

Checklist

Are you able to...

- describe your daily routines?
- describe outdoor temperature changes at different times of the day?
- recognize some words that are used to describe the sun at different times?
- describe how the position of the sun affects the length and shape of shadows?